



# P5 and P6 Parents' Engagement on Full SBB (Sec) and DSA

---

Henry Park Primary School

Lead with Character Serve with Talents



# Direct School Admission for Secondary Schools (DSA-Sec)

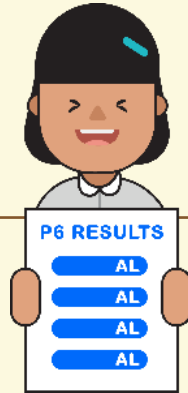
Henry Park Primary School

**THRIVE**

# Entering a secondary school

## S1 Posting Process

- Based on a student's **PSLE score**
- **Most students enter secondary schools this way**

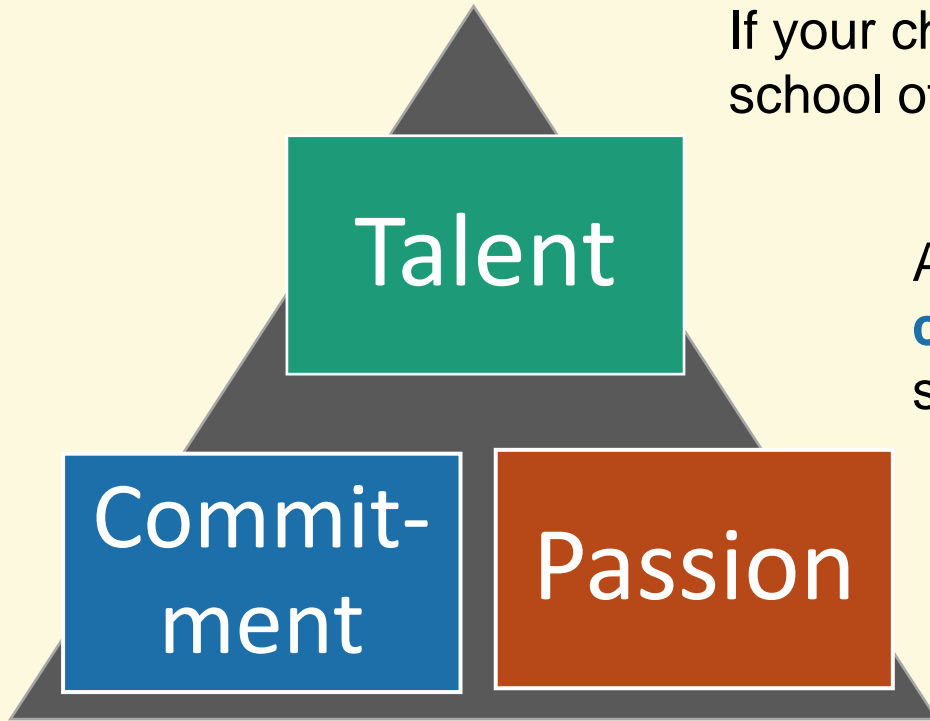


## DSA-Sec

- Based on a diverse range of **talents and achievements in specific academic subjects or non-academic areas, beyond what the PSLE recognises**
- Allows students to **access school programmes to develop their talents**



# Is the DSA-Sec right for my child?



If your child has specific **talents** which a school offers the DSA-Sec in

And is **passionate** about and **committed** to developing his/her strengths and interests

DSA-Sec can support his/her development in that talent area.

# Finding a suitable school

- **Talent areas that match your child's strengths and interests**
- Pace of learning
- Other programmes offered by the school
- School culture
- Location



# Finding a suitable school

- MOE School Finder
- Secondary school websites
- Open Houses

- MOE Schoolbag

**SCHOOLBAG**  
THE EDUCATION NEWS SITE



**SCHOOL  
FINDER**

Admission type

- Direct School Admission (DSA)
- Integrated programme

DSA main Category

All categories ▼

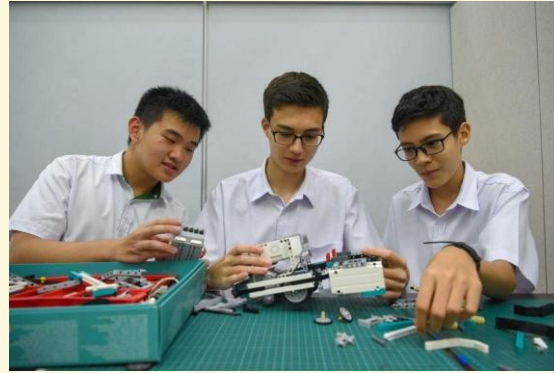
DSA talent areas

[Clear](#)

Look up

# Wide range of DSA Talent Areas

**Journalism and Broadcasting**  
(Holy Innocents' High School)



**Innovation**  
(St Joseph's Institution)

**Forensic Science**  
(Fuhua Secondary School)



Taken from: [www.straitstimes.com/singapore/parenting-education/kids-got-talent-here-are-direct-school-admission-categories-you-might-not-know-about](http://www.straitstimes.com/singapore/parenting-education/kids-got-talent-here-are-direct-school-admission-categories-you-might-not-know-about)

# Engaging your child at home

Have regular conversations with your child to understand his/her strengths, interests, abilities, talents and aspirations.

Affirm your child and offer support when he/she shares his/her plans with you.



Be open and flexible when discussing your child's preferences, needs and choices.

Manage your own expectations and do not project these expectations onto your child.



**THRIVE**



# Engaging the P6 students

- Helping your child understand DSA
- Engagement session with ex-students



# What are schools looking for?

- The selection process differs across schools, and across different DSA-Sec categories.
- Generally, schools are looking for candidates with:

Talent, passion, commitment	Strong personal qualities	Good academic fit
Schools may look at <b>achievements</b> and <b>participation</b> . Schools may also conduct tests, trials or selection camps to identify students with <b>strengths, or sound fundamentals and potential</b> , in particular areas.	Schools may look at CCA records and VIA participation. Schools may also conduct interviews.	Schools may look at primary school results to ensure students can benefit from the school's pace of learning.

# DSA Application

- Online via the DSA-Sec Portal  
(Refer to <https://www.moe.gov.sg/secondary/dsa/application>)
- Indicate up to three choices. Order of the choices does not matter during application.
- School of the Arts and Singapore Sports School
  - Apply directly to the school
  - On top of the DSA-Sec choices made through the DSA-Sec Portal



# Examples

EXAMPLE 1	Talent(s)	School(s)	You can apply to up to three different schools, with no restrictions on the talent areas.
	Choir	School A	
	Choir	School B	
	Choir	School C	

EXAMPLE 2	Talent(s)	School(s)	If you choose two areas in one school, you can apply to two different schools only.
	Choir	School A	
	String Orchestra	School A	
	Choir	School B	

EXAMPLE 3 (Not allowed)	Talent(s)	School(s)	You cannot use all three choices on one school.  You can leave the third choice blank or choose another school.
	Choir	School A	
	String Orchestra	School A	
	Mathematics	School A	

# DSA Timeline

2024 DSA-Sec application will start in May. More details will be released by end-Apr 2024. **Refer to MOE's DSA-Sec website for updates.**



**Before  
MAY**

Explore schools and their talent areas, and shortlist suitable schools



**MAY**

Apply for DSA



**JUN to  
SEP**

Attend selection trials, interviews and auditions



**By SEP**

Receive DSA offers if successful

# DSA Selection Outcomes

- Confirmed Offer
  - Child still needs to attain a PSLE score that qualifies for a **Posting Group** offered by the school
- Wait List
  - Opt for the school during the school preference submission period
- Unsuccessful
  - Must take part in the S1 posting process



# Selecting Preferred Schools

- In accepting a DSA-Sec offer, your child is expressing a commitment to study in that school and develop their talent in the chosen area. They should honour this commitment.
- If your child is not ready to commit to the DSA school, do not submit any school preference.



# DSA Posting Results

- Your child's DSA-Sec allocation results will be released along with the PSLE results.
- If your child is successfully admitted to a school through DSA-Sec, they will **not be allowed** to participate in the S1 Posting process. They will also **not be allowed** to transfer to another school after the release of their PSLE results.





More information on DSA-Sec  
can be found on  
[www.moe.gov.sg/secondary/dsa](http://www.moe.gov.sg/secondary/dsa)



# 2023 DSA in HPPS

- 71 students
- 28 schools



**THRIVE**



# 2023 DSA in HPPS

- ANGLO-CHINESE SCHOOL (BARKER ROAD)
- ANGLO-CHINESE SCHOOL (INDEPENDENT)
- CEDAR GIRLS' SECONDARY SCHOOL
- CHIJ ST. NICHOLAS GIRLS' SCHOOL
- CHIJ ST. THERESA'S CONVENT
- COMMONWEALTH SECONDARY SCHOOL
- CRESCENT GIRLS' SCHOOL
- DUNMAN HIGH SCHOOL
- FAIRFIELD METHODIST SCHOOL (SECONDARY)
- FUHUA SECONDARY SCHOOL
- GAN ENG SENG SCHOOL



# 2023 DSA in HPPS

- HWA CHONG INSTITUTION
- MAYFLOWER SECONDARY SCHOOL
- METHODIST GIRLS' SCHOOL (SECONDARY)
- NAN HUA HIGH SCHOOL
- NANYANG GIRLS' HIGH SCHOOL
- NATIONAL JUNIOR COLLEGE
- NUS HIGH SCHOOL OF MATHEMATICS AND SCIENCE
- QUEENSWAY SECONDARY SCHOOL
- RAFFLES GIRLS' SCHOOL (SECONDARY)
- RAFFLES INSTITUTION
- RIVER VALLEY HIGH SCHOOL



# 2023 DSA in HPPS

- SCHOOL OF SCIENCE AND TECHNOLOGY
- SCHOOL OF THE ARTS, SINGAPORE
- SINGAPORE SPORTS SCHOOL
- ST. ANDREW'S SECONDARY SCHOOL
- ST. JOSEPH'S INSTITUTION
- ST. MARGARET'S SCHOOL (SECONDARY)
- YUHUA SECONDARY SCHOOL



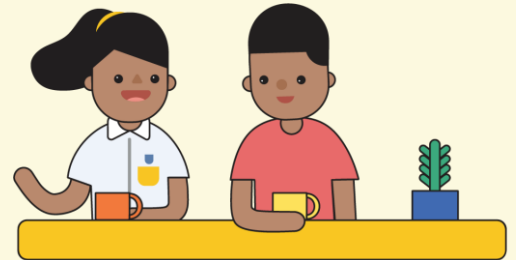
# FAQs

**1. Do I need to submit any testimonials during application?**

No, there is no need to.

**2. Will scores of NWAs (e.g. P6 Term Review) be shared with the secondary school?**

No. Only the overall marks of WAs will be shared.



# FAQs

## 3. Can a student who has not represented the school for competitions apply for DSA?

Yes.

### THE STRAITS TIMES



River Valley High School student Wai Jone Sher, now in the second year of junior college, enrolled through the DSA category of Scientific Investigation.

She did not have a portfolio of certificates because she had no experience in science-related competitions. Back in Nan Hua Primary School, her co-curricular activity was volleyball.

But she enjoys using her science knowledge to solve problems at home, such as making a reflector to keep birds away from the balcony.

She talked fervently about her passion projects during the DSA interview, and it was her keen interest in science which opened the door for her.

Taken from:

[www.straitstimes.com/singapore/parenting-education/kids-got-talent-here-are-direct-school-admission-categories-you-might-not-know-about](http://www.straitstimes.com/singapore/parenting-education/kids-got-talent-here-are-direct-school-admission-categories-you-might-not-know-about)

Lead with Character Serve with Talents



# Full Subject-Based Banding (Sec)

Henry Park Primary School





# PSLE Score

AL	Raw mark range
1	$\geq 90$
2	85-89
3	80-84
4	75-79
5	65-74
6	45-64
7	20-44
8	$< 20$

English Language AL 3

Mathematics AL 2

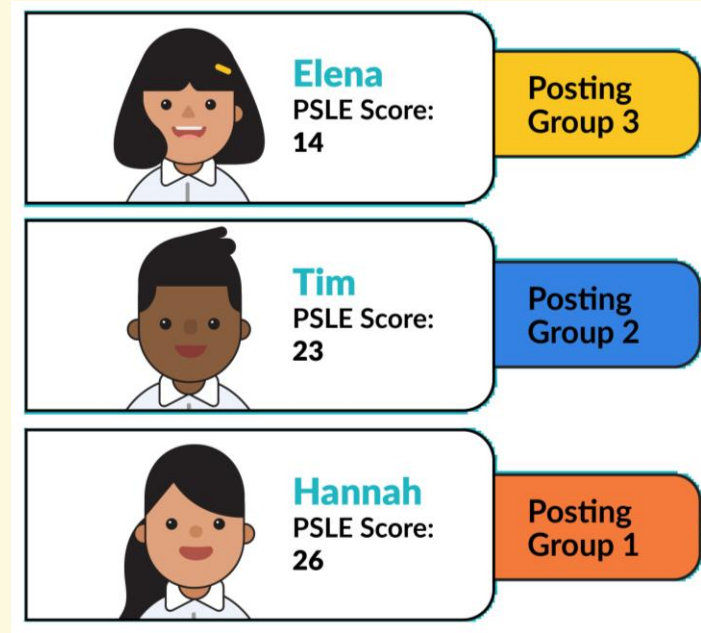
Science AL 3

Mother Tongue Language AL 2

**PSLE SCORE: 10**

# Posting Groups

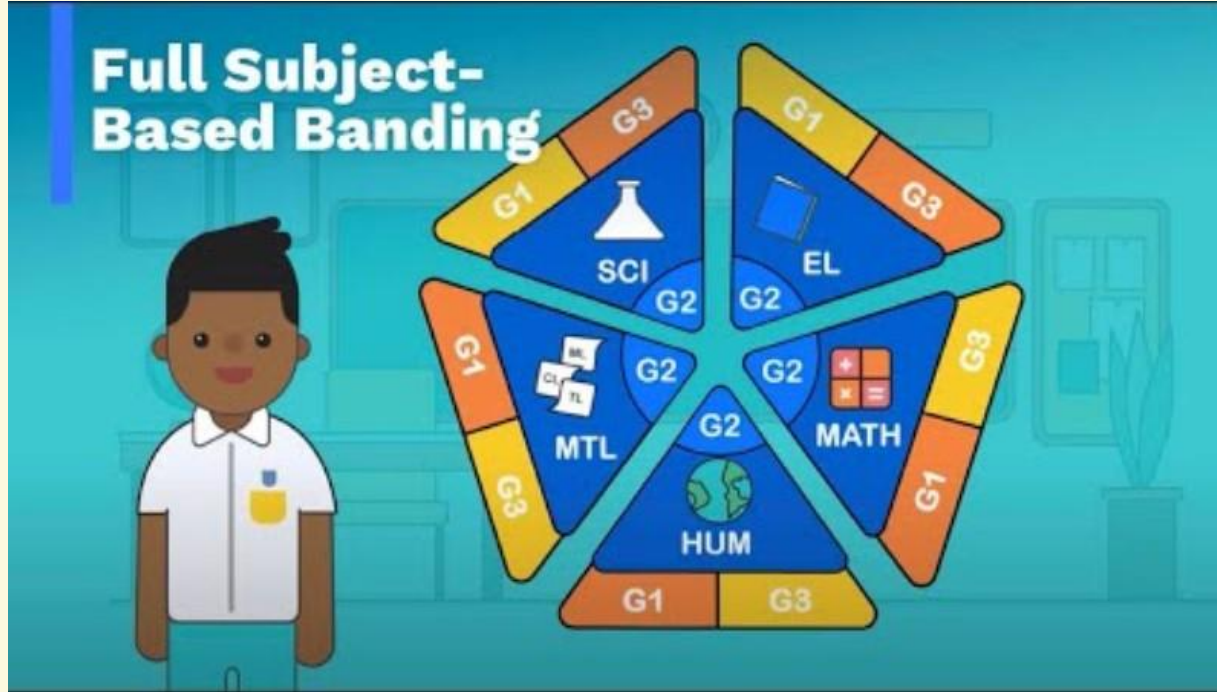
PSLE Score	Posting Group	Subject level for most subjects
4-20	3	G3
21 and 22	2 or 3	G2 or G3
23 and 24	2	G2
25	1 or 2	G1 or G2
26 - 30 (with AL 7 in EL and MA)	1	G1



Infographic: Rafa Estrada Source: Ministry of Education, Feb 28, 2023



# Full Subject-Based Banding



Video Link:

[https://www.youtube.com/watch?v=ro\\_sp0B6uGE](https://www.youtube.com/watch?v=ro_sp0B6uGE)

# What is Full SBB?

- Full SBB will be implemented in secondary schools from 2024, and aims for students to:



Have greater ownership of their learning according to their strengths, interests, abilities, talents and learning needs.



Develop a growth mindset and an intrinsic motivation to learn for life.



Have more opportunities to interact with friends of different strengths, interests, abilities and talents.

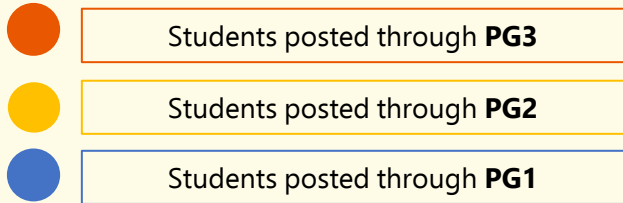


Have more options for post-sec pathways, while ensuring they have strong fundamentals and can thrive in their chosen pathway.



# Full SBB: Mixed form classes in Lower Secondary

With Full SBB:  
Mixed form classes



- Under Full SBB, students will be placed in mixed form classes in Lower Secondary to ensure a **mix of learner profiles**.
  - Provides students with **more opportunities** to interact with other students of different strengths and interests.
  - Enables students to **build meaningful friendships and learn to value different perspectives**.

# Full SBB: Common Curriculum

**Common Curriculum  
Subjects**  
taken in mixed form classes  
(~ 1/3 curriculum time)

## **Examinable Subjects:**

- Art
- Design & Technology (D&T)
- Food & Consumer Education (FCE)

## **Non-examinable Subjects:**

- Character & Citizenship Education (CCE)
- Music
- Physical Education (PE)

- The six common curriculum subjects would each have a single syllabus for all students at Lower Secondary levels.
  - These subjects will be taught and assessed at a common level that is accessible to all students.
  - Teachers will adopt a range of approaches to cater to the different learning needs of their students.
- For other subjects, students attend classes with others taking the subject at the same subject level.

# Offering subjects at a more demanding level at the start of Sec 1

- Students posted to schools through PG1 and PG2 can offer **English Language, Mother Tongue Languages, Mathematics and Science** at a more demanding level based on their PSLE AL for each subject.

FOR STUDENTS POSTED TO SCHOOLS THROUGH PG1 AND PG2			
SUBJECT	PSLE SUBJECT LEVEL	PSLE AL FOR SPECIFIC SUBJECT	OPTION TO TAKE THE S1 SUBJECT AT :
• English Language • Mother Tongue Language • Mathematics • Science	Standard	AL 5 or better	G3 or G2
		AL 6	G2
	Foundation	AL A	G2

# Offering subjects at a less demanding level (LDL) at the start of Sec 1

- Students have the option to offer **Mother Tongue Languages (MTL)** at LDL based on their PSLE Achievement Level (AL) for the subject:

POSTING GROUP (PG)	PSLE AL FOR MTL <sup>^</sup>	OPTION TO OFFER MTL AT A LESS DEMANDING LEVEL
PG3	AL 6 (AL A)	G2
	AL 7-8 (AL B-C)	G1 or G2
PG2	AL 7-8 (AL B-C)	G1

<sup>^</sup> Foundation level AL A to AL C will be mapped to AL 6 to AL 8 of Standard level subjects respectively.

- Students who are eligible to offer MTL at LDL can still choose to offer MTL at-level if they prefer.



# FAQs

## How to interpret the PSLE Score Ranges?

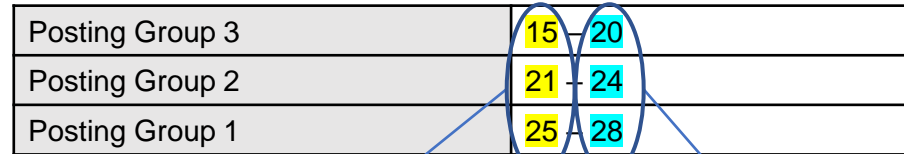
The PSLE Score range refers to the PSLE Score of the first and last student admitted to a particular school in the previous year via the S1 Posting Exercise. This shows the range of student profiles who enter each school.

### Example

XX Secondary School

PSLE Score range of 20XX (previous year's S1 Posting Exercise)

Posting Group 3	15	20
Posting Group 2	21	24
Posting Group 1	25	28



PSLE Score of the first student posted into the school in the respective PG.

PSLE Score of the last student posted into the school in the respective PGs [i.e., the school's **Cut-Off Point (COP)**].

# FAQs

## How to interpret the PSLE Score Ranges?

	Affiliated	Non-affiliated
Posting Group 3	-	11 - 15
Posting Group 2	-	21 - 23
Posting Group 1	-	25 - 28

PSLE Score of the first student posted into the school in the respective PG.

PSLE Score of the last student posted into the school in the respective PGs.

PSLE Score	Posting Group	Subject level for most subjects
4-20	3	G3
21 and 22	2 or 3	G2 or G3
23 and 24	2	G2
25	1 or 2	G1 or G2
26 - 30 (with AL 7 in EL and MA)	1	G1

Infographic: Rafa Estrada Source: Ministry of Education, Feb 28, 2023



More information on Full SBB  
can be found on  
[www.moe.gov.sg/psle-fsbb](http://www.moe.gov.sg/psle-fsbb)





# Thank you

for making time to attend our parents' briefing. Together, we can help your child reach his/her full potential!