

Parents' Engagement Session 2026

Direct School Admission for Secondary Schools (DSA-Sec)

1. Can P5 students apply for DSA?

No. Only Primary 6 students can apply for DSA.

We included Primary 5 parents for the engagement session so that you can gain an early understanding of the DSA process. This was also based on feedback from parents in previous years who found it helpful to receive the information earlier.

2. Will my child's P5 results be shared with the secondary schools?

The overall marks for the P5 Weighted Assessments will be shared. This is the mark which you see in your child's report book. P6 results will not be shared as we do not have Weighted Assessments in P6.

3. What information will be shared with the secondary schools?

Please refer to <https://www.moe.gov.sg/secondary/dsa/application> for more information on the information shared by the primary school and the information you may provide during the DSA application.

4. Should my child participate in DSA?

DSA seeks to broaden the recognition of talents and achievements beyond academic grades. Students can gain direct entry to certain secondary schools based on their talent in sports, Co-Curricular Activities and specific academic areas.

However, the DSA is not a pathway that suits every student.

To determine if DSA is an appropriate pathway for your child, you should carefully consider your child's strengths and interests, and the school's programmes and their ability to develop specific talent.

Parents should explore the list of schools and programmes with their child for DSA-Sec using SchoolFinder.

5. If my child is offered admission to a secondary school through DSA, does he need to meet the school's cut-off-point for S1 posting?

No, your child does not need to meet the school's Cut-off point under Secondary 1 Posting. To be successfully admitted to a school through DSA, your child's PSLE results must qualify them for a Posting Group offered by the school. The table below shows the PSLE score range for the respective Posting Groups.

PSLE Score	Posting Groups	Indicative level for most subjects at start of S1
4 - 20	3	G3
21 and 22	2 or 3	G2 or G3
23 and 24	2	G2
25	1 or 2	G1 or G2
26 - 30 (with AL7 in English and Mathematics)	1	G1

Taken from <https://www.moe.gov.sg/secondary/s1-posting/how-to-choose/what-are-posting-groups>

6. If my child's conduct grade is only 'Good' in Primary 5, can we still apply for DSA?

Each secondary school has its own selection process and criteria for DSA. Please visit the respective schools' websites to learn more about their specific requirements.

7. What is the likelihood of my child being accepted through DSA if she is only average in her studies, but the three schools we have selected for DSA in her talent area require a PSLE score of less than 10?

When selecting schools for DSA, consider not only the talent area but also whether the school is a good academic fit for your child, where your child can manage the academic rigor and thrive.

Before offering a place through DSA, secondary schools will assess your child's overall ability to cope with their academic and non-academic programmes using various sources of information, such as primary school results and interviews.

8. If my child is on a wait list, do we still need to apply to the school during Secondary 1 (S1) posting?

If your child has received a confirmed offer or is placed on a wait list through DSA-Sec, you will be able to submit your school preferences through the DSA-Sec Portal.

Your child's DSA allocation results will be released along with the PSLE results. At this stage, there are only 2 possible allocation outcomes: successful or unsuccessful.

If your child is **successfully admitted** to a secondary school through DSA, they are not allowed to submit school choices during S1 Posting, nor transfer to another school. They are expected to honour their commitment to the posted DSA-Sec school for the duration of the programme.

If your child is **unsuccessfully**, they must participate in S1 Posting.

9. Will there be a scenario where a child is accepted by 2 different schools via DSA?

Yes, this is possible. If your child has received confirmed offers and/or is put on wait lists, you will be asked to submit your preferred choice of schools in order of your child's preferences through the DSA-Sec Portal in late October.

10. If my child is unsuccessful in the DSA, can I still select the same secondary school during S1 posting?

Yes, you can still opt for the schools that your child has applied to during the DSA. Admission to the school during S1 posting will be based on your child's PSLE score, choice order of schools and vacancies at the selected school.

11. If my child is successfully admitted to a secondary school through DSA, is she allowed to change her CCA after joining the school?

If the CCA is the chosen talent area, she will not be allowed to change her CCA. In accepting a DSA offer, your child is expressing a commitment to study in that school and develop their talent in the chosen area. Your child should honour this commitment.

12. What are the requirements for leadership as a DSA talent area?

The selection process and requirements differ across schools, and across different DSA talent areas. Please refer to the respective secondary school websites or attend their Open House for more information.

13. If a secondary school offers a particular CCA but it is not in their list of DSA talent areas, can I still apply for DSA to that school?

No. You can only apply for DSA to a secondary school through a DSA talent area offered by the school.

14. Where can I get more information regarding DSA?

For more information, refer to MOE's DSA website (www.moe.gov.sg/secondary/dsa).

You can also find answers to commonly asked questions on DSA on the following website: <https://www.moe.gov.sg/faq?categoryid=FD36A5CE93E74E11B907D5EB5954E676>

Full Subject-Based Banding (Full SBB)

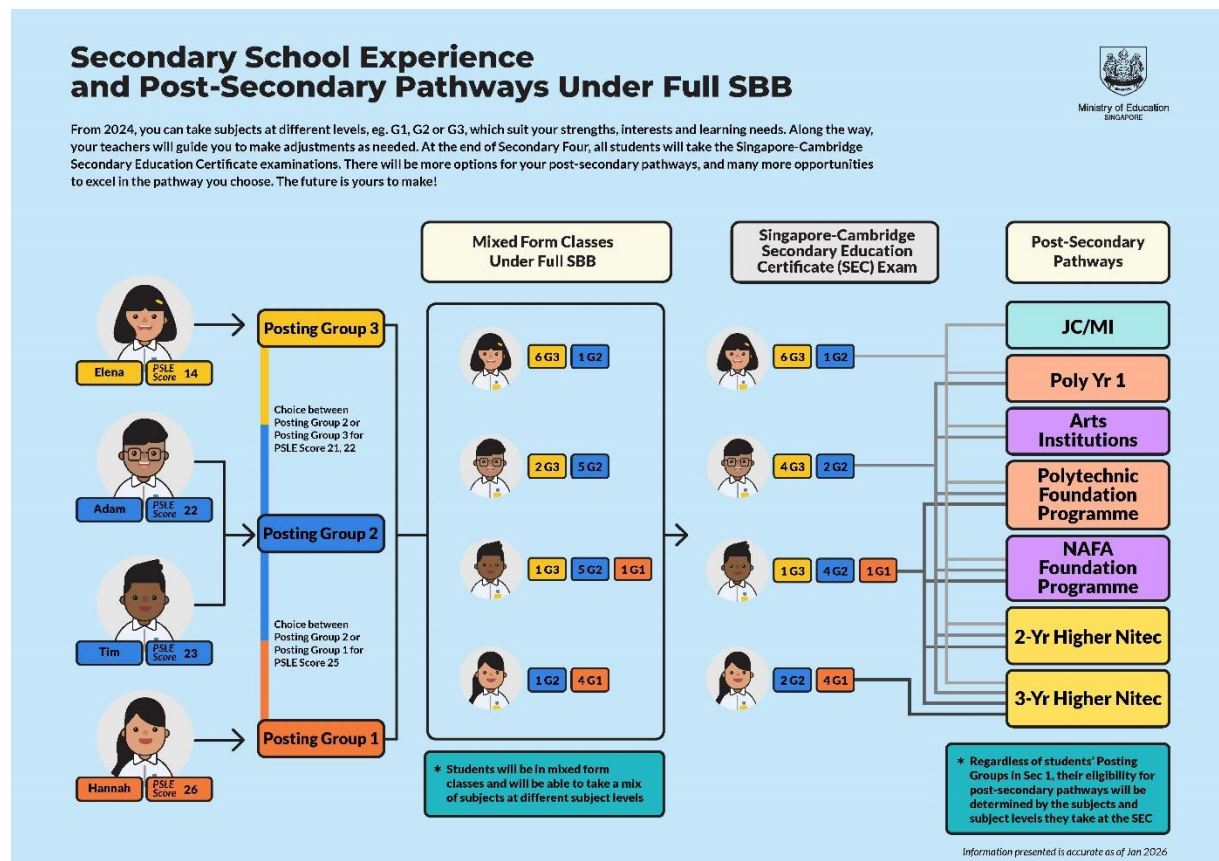
1. What are the benefits of taking subjects at the three subject levels?

Throughout their secondary school education, students can take subjects at three subject levels, known as G1, G2, G3 (G stands for General), mapped from the previous N(T), N(A) and Express standards respectively. Students will have the flexibility to adjust their subject levels at appropriate junctures, based on their strengths, interests and learning needs. Students will subsequently access programmes and post-secondary pathways based on their various subjects and subject level combinations.

2. If a child does a combination of G3 and G2 subjects, will she be taking the national exam at the end of the 4th or 5th year?

From 2027, graduating students will sit for the Singapore-Cambridge Secondary Education Certificate (SEC) examinations, at their respective subject levels (i.e. G1, G2, G3). There will be no change to the examination format, and the SEC examinations will continue to be jointly examined and awarded by the Singapore Examinations and Assessment Board, MOE, and the Cambridge International Education.

The option of a fifth year in secondary school will continue to be available for eligible students, after they have sat for the SEC examinations at the end of Secondary 4, to pace their learning and take subjects at a more demanding level to access more post-secondary pathways.



Taken from <https://www.moe.gov.sg/psle-fsbb/resources/full-subject-based-banding>

3. Will the Posting Group be shown on the national certification at the end of secondary school?

No. Posting Groups are only used for the purposes of admitting students into secondary schools and to guide the initial subject levels students offer at the start of Secondary One.

4. For IB and IP schools, is Full SBB still relevant?

For IB/IP schools, full SBB is not relevant.

5. Where can I get more information regarding Full SBB (Sec)?

For more information, refer to MOE's website (www.moe.gov.sg/psle-fsbb).

You can also find answers to commonly asked questions on full SBB on the following website:
<https://www.moe.gov.sg/psle-fsbb/full-subject-based-banding/faq>